

# The Baptist Builder

FIRST BAPTIST CHURCH  
PALAFOX and LaRUA STS.  
PENSACOLA, FLORIDA

JAMES L. PLEITZ, D.D.  
PASTOR

VOL. XXII

AUGUST 19, 1971

NO. 33

## YES, THEY ALL GOT IN (AND, ARRIVED SAFELY)



AND THEY WERE WELL FED  
(THANKS TO EASTERN AIRLINES AND OUR SENIOR ADULTS)



## **THE SIGNALS ARE RIGHT FOR OUTREACH**

James Frost, director, Sunday School Department, Florida Baptist Convention, wrote an article for **OUTREACH Magazine** which was published in the June issue. Here, with adaptations only to conserve space, is his article:

Throughout America, thousands of traffic lights regulate the traffic flow for millions of automobiles. Most of these lights use three colors—red, amber and green . . . A trained driver who knows his signals can find his way safely to any destination within a metropolitan area with a minimum of difficulty.

There are striking parallels between the needs of this "wheeling" generation and a church on the move. Leaders who major on outreach must observe the red, amber, and green lights properly to guide their churches to reach the masses for Christ . . .

What is the message in the lights for our churches?

### **THE RED LIGHT MEANS STOP Stop Equating All Programs in Your Church.**

Stop putting everything on the same level of importance in your church. Make outreach the number one consideration.

### **Stop Saying That People Can't Be Reached Anymore.**

Stop telling yourself and your people that it is hard to reach the lost today. When has it not been difficult to confront the unsaved and the unchurched with the gospel? Stop blaming changing conditions and changing communities for the decline of your Sunday School enrollment. Under these same handicaps, thousands of churches are able to reach people for Christ by adapting their programs and approaches to meet changing conditions.

### **Stop Putting Quality and Quantity Against Each Other.**

Persons must be reached before they can be helped. Stop rationalizing failure and start moving toward success.

### **Stop Resisting Changes That Are Needed.**

These are changing times. It is evident that changes will continue to explode and accelerate in the 70's . . . Stop acting like Mr. B. E. Cautious and become Mr. Bold!

## **AMBER SIGNALS CAUTION**

### **Don't Be Cautious About Demanding Something of Your People.**

In every area of life, people respond to strong leadership that knows where it is going and why . . . Christians need and want a challenge that is demanding and hard.

### **Don't Be Cautious About Witnessing To The Lost.**

We need a renewed vision of what it means to be "without Christ." Our people must see with clarity the plight of the unregenerate. They must be made to feel responsible for taking the gospel to them.

### **Don't Be Cautious About Starting New Units.**

The slowdown in growth in many churches can be attributed to the fact that classes have stagnated in enrollment and attendance. Members have become complacent and satisfied.

### **Don't Be Cautious About Conducting Regular Planning and Visitation.**

These are old-fashioned terms and old-fashioned methods that are never out of date. A regular planning meeting for Sunday School officers and teachers is a must in any size church. A great program of Spirit-filled visitation is the one sure way to reach people. Nothing else will substitute for it. This continual going must express a warm and friendly interest in people's needs. It must invite them to Bible study and help them to know Christ as Savior and Lord.

## **THE GREEN LIGHT MEANS GO**

This is a traveling generation, hungry for new adventure . . . The point is not just that we go . . . The question is, as we go will we represent and speak for Christ and His church?

We must reinforce the loyalties of our people to Jesus Christ so that they see that He must be first in their lives. This does mean that Sunday is a special day. But it also means that wherever our work or vacations take us, the green light is on for personal witnessing and church attendance.

### **Go Toward the Goal Christ Set For Christians.**

The Apostle Paul verbalized the green light for the Christian's direction and dedication in these words, "I keep going on, grasping ever more firmly that purpose for which Christ Jesus grasped me." (Philippians 3:13, Phillips Translation)



## Go to Take the Bible to the People Where They Are.

The expanded Bible teaching program of a church begins with a growing Sunday School on Sunday—and goes far beyond. It may mean cooperating with Mission Action programs in going to jails, penal institutions, hospitals, rest homes, and homes for the aged to share the Bible message. It may mean conducting fellowship Bible classes in order to reach people who will not be enlisted for the regular Sunday School session.

## Go to the Resources of God for Power.

Our main resource in Bible teaching is the power of the Holy Spirit. He is in us as the agent of our redemption. He is in us to remind us of the sayings of Jesus. He is in us to be our teacher and guide. He is in us to empower us for the arduous work of the Master.

## THE LIGHT IS CHANGING

The wise motorist waits for the changing traffic light. He knows what the signals mean and acts accordingly.

Can you read the signals for outreach? They are specific and clear. They are right for Advance Now!

## BE IN YOUR PLACE SUNDAY

At the beginning of the summer, Dr. Pleitz challenged us not to let our Sunday School attendance fall below the 1100 mark on any summer Sunday. Last Sunday, in addition to those who were in the Dominican Republic (they were counted in our total attendance, because we knew they were in Sunday School there) there were a whole host of other folks not in Sunday School. Let's be faithful in our program here even as we remember to pray for our Singing Samaritans in the Dominican Republic. Be sure that every member of your family is here for Sunday School and the worship services on Sunday.

## SERMON TOPICS

11:00 A.M.

### "ON KNOWING GOD"

(Acts 17:22-31)

7:15 P.M.

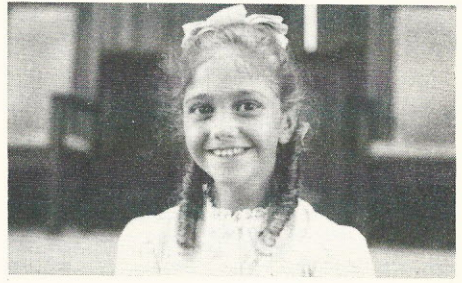
### "THE PATHWAYS OF PAUL"

Clyde K. Bizzell

## THE PATHWAYS OF PAUL

So many have asked about the pictures of the trip I made in June. I am planning to share some of these in the service on Sunday night. I'll promise you that I'll not show them all and we'll be out within the hour. Plan to share with us as we follow in the pathways of Paul Sunday night.

## RECEIVED INTO CHURCH MEMBERSHIP LAST WEEK



Nancilee Peaks

## OUR CHURCH FAMILY

### IN THE HOSPITALS:

#### Baptist

Mrs. Franklin D. (Betty) Campbell,  
Mrs. G. C. (Winnie) Ware, Mr. L. V.  
Byrd, Mrs. Woodrow J. (Jeanette)  
Darden.

#### Specialty Care Center

Mrs. Roy (Valena) Macon, Mrs. Clara  
Beard, Miss Occie Clubbs.

#### Sacred Heart

Mr. Lee Hardy

#### University of Alabama Hospital and Clinic, Birmingham, Alabama

Mrs. P. O. (Ruby) Davis

### HOME FROM THE HOSPITAL:

Mrs. Charles (Arla) Danforth, Mr.  
H. W. Emmons, Mrs. Raul (Zoriado)  
Fernandez, Brigett Hubbard, Mr.  
Dewey Johnson, Mrs. Martin L. (Kay)  
White, Byron H. Griffin.

### SYMPATHY TO:

Mr. Vernie E. Chance in the loss of  
his son.

## FOCUS ON FIRST FOLKS

John Ladner graduated from Pensacola Junior College and will be attending the University of Missouri at Rolla.

## MEMORIAL FLOWERS

The flowers in the sanctuary this past Sunday were in memory of Stephanie Sue Kohli and were given by LCdr. and Mrs. D. W. Kohli.

The flowers in the sanctuary this Sunday are in memory of Miss Betty Stark and are given by Mr. and Mrs. Freddie Stark.



# THE BAPTIST BUILDER

Published Weekly by the  
**FIRST BAPTIST CHURCH**  
 500 North Palafox Street  
 Pensacola, Florida 32501  
 Second Class Postage Paid at  
 Pensacola, Florida

**CHURCH OFFICE**.....433-5631

## CHURCH OFFICERS

Joseph Napier, Chairman of Deacons.....932-5122  
 F. Willard Vickery, S.S. Dir.....476-8431  
 Ed Bell, Dir. of Church Training.....476-5990  
 Mrs. Tate Bousman, W.M.U. Dir.....438-0164  
 Mrs. Joseph F. Boykin, Sr.  
 Director of Library Services.....455-7925

## CHURCH STAFF — Residence Phones

Dr. James L. Pleitz, Pastor.....433-1502  
 Clyde K. Bizzell, Asst. to Pastor.....432-7237  
 Paul Royal, Minister of Music.....432-8573  
 William V. (Bill) Phillips,  
 Dir. of Youth Education.....477-0133  
 Miss Dale Mooneyham,  
 Dir. of Children's Work.....438-2586  
 Mrs. Betty Getman, Organist.....432-0648  
 Mrs. J. C. Rountree, Fin. Secy.....432-1326  
 Mrs. Nelma Camp, Pastor's Secretary  
 Mrs. Inez Warfield, Ed. Sec.  
 Mrs. G. T. Sutton, Mem. Secy.....432-5640  
 Mrs. Drucilla Belich, Sec.  
 Ernest Barrineau, Treasurer.....432-5079  
 Mrs. Kitty Manning, Dietician.....456-2124

All material to be included in the Builder  
 should be in the office, preferably in  
 writing, not later than 9:00 a.m. Mondays.

## LOOKING AT LAST WEEK

The Church in Study .....1060  
 Main Sunday School .....1034  
 Crippled Children's Home .... 26  
 The Church in Training ..... 254  
 Christian Training Hour .... 193  
 Other Training Activities .... 161  
 Tithes and Offerings:  
 Budget .....5,674.83  
 Specials .....1,615.41  
**TOTAL OFFERING** .....\$7,290.24

## DAILY BIBLE READINGS

Sunday, August 22: "Pursuit of Justice"  
 Deuteronomy 16:13-22

Monday, August 23: "A Rule for  
 Rulers". 2 Samuel 23:1-7

Tuesday: August 24: "The Path of  
 Light". Proverbs 4:14-23

Wednesday: August 25: "The Silver  
 Tongue". Proverbs 10:6-22

Thursday: August 26: "An Acceptable  
 Offering". Proverbs 21:1-14

Friday: August 27: "What God Re-  
 quires". Micah 6:1-9

Saturday: August 28: "To Each His  
 Due". Revelation 22:1-14

# Opportunities of the Week

Sunday, August 22

- \* 9:30 A.M.—Sunday School
- \* 11:00 A.M.—Morning Worship
- \* 6:00 P.M.—Christian Training Hour
- \* 7:15 P.M.—Evening Worship

Tuesday, August 24

- 10:00 A.M.—Senior Adult Fellowship  
 Picnic — Bus leaves from the  
 church.
- 7:30 P.M.—Boy Scouts "The Cellar"

Wednesday, August 25

- \* 5:50 P.M.—Fellowship Dinner
- \* 6:30 P.M.—Sunday School Officers  
 and Teachers Meeting, Mission  
 Friends, GA's, Acteens and RA's
- \* 7:30 P.M.—Prayer Service . . Business  
 Meeting
- \* 8:00 P.M.—Adult Choir Rehearsal

Thursday, August 26

- 6:30 P.M.—Naomi Class Social,  
 "The Cellar"

Saturday, August 28

- 10:30-12:00 Noon—Choir Enrolment  
 Party, Dining Room

## SUMMER READING CLUB

### RECOGNITIONS

Next Wednesday night at the Fellow-  
 ship supper, the Library Staff will  
 present certificates to those participat-  
 ing in the Summer Reading Club.

It's almost time to go to

— The Carnival On The Moon —  
 for everyone lucky enough to be  
 between the ages of 4 and 11.

## NEWS FROM THE DOMINICAN REPUBLIC

These lines are being written on  
 Wednesday at noon just prior to the  
 BUILDER going to the press:

In telephone conversation with Dr.  
 Pleitz this morning he indicated that  
 everyone there was well and that the  
 work was going even better than they  
 had anticipated.

They will return to Pensacola on  
 Thursday, August 26. The expected ar-  
 rival time at the Pensacola Airport is  
 2:50 P.M. Any change in this will be  
 announced Sunday or Wednesday night.